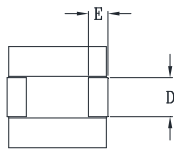
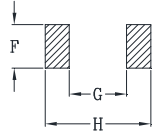
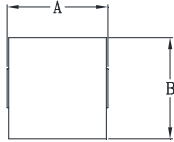


# CYNTEC CO., LTD.

## 乾坤科技股份有限公司

### HCB1380 Series

#### Mechanical dimensions



Suggested PWB Layout

Dimensions (Unit : mm)

	0.26mΩ	0.53mΩ	0.32mΩ	0.165mΩ
A	13.0 MAX		13.3 MAX	
B	13.0 MAX			
C	8.0 MAX		8.2 MAX	
D	5.0	5.3	5.0	
E	2.5		2.5	
F	5.8		5.8	
G	7.1		7.5	
H	13.2		13.5	

#### Electrical Characteristics @ 25°C, 100KHz, 1V

Delta P/N	L <sup>1</sup> (nH)	Li (nH)	DCR (mΩ)	Isat <sup>2</sup> (A)			Ir <sup>3</sup> (A)
				25°C	100°C	125°C	
HCB1380-211	210	180	0.26 ± 9.4%	80	65	60	50
HCB1380-251	250	212		66	54	50	
HCB1380-261	260	221		63	51	47	
HCB1380-321	320	272		47	38	35	
HCB1380-361	360	306		43	35	32	
HCB1380-441	440	374		34	28	26	
HCB1380-501	500	425		28	23	21	
HCB1380-211H	210	180	0.53 ± 11.5%	80	65	60	35
HCB1380-251H	250	212		66	54	50	
HCB1380-261H	260	221		63	51	47	
HCB1380-321H	320	272		47	38	35	
HCB1380-361H	360	306		43	35	32	
HCB1380-441H	440	374		34	28	26	
HCB1380-501H	500	425		28	23	21	
HCB1380-211H1	210	180	0.32 ± 9.4%	80	65	60	45
HCB1380-251H1	250	212		66	54	50	
HCB1380-261H1	260	221		63	51	47	
HCB1380-321H1	320	272		47	38	35	
HCB1380-361H1	360	306		43	35	32	
HCB1380-441H1	440	374		34	28	26	
HCB1380-501H1	500	425		28	23	21	
HCB1380-211L	210	180	0.165 ± 10%	80	65	60	68
HCB1380-251L	250	212		66	54	50	
HCB1380-261L	260	221		63	51	47	
HCB1380-321L	320	272		47	38	35	
HCB1380-361L	360	306		43	35	32	
HCB1380-441L	440	374		34	28	26	
HCB1380-501L	500	425		28	23	21	

1. Tolerance of inductance : ± 20%
2. Isat is the DC current which cause the inductance drop to Li
3. Ir is the DC current which cause the surface temperature of the part increase approximately 40 °C.
4. Operating temperature: -40°C to 125°C (Self-temperature rise included).